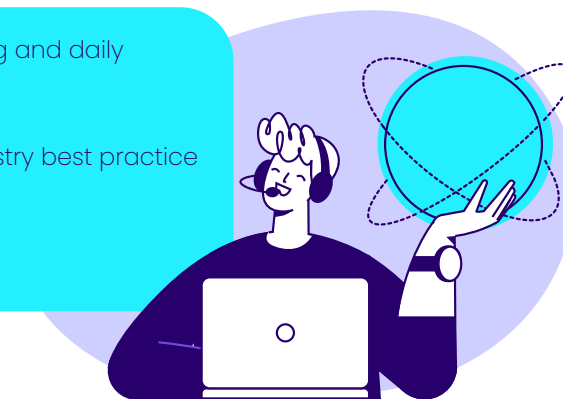


# Managed Server

Proactive monitoring, maintenance and support for your server environment



- 24/7 Network monitoring and alerts
- Proactive remediation of SLA breaches
- Backed by a team of certified engineers with more than a decade of experience in IT support.
- Proactive remote monitoring and daily health checks
- IT security aligned with industry best practice
- Predictable IT support costs



## Product Overview

Qwerti Managed Server offers comprehensive monitoring alerting and remediation of server environments. This allows real-time insight into performance, capacity and availability, for proactive remediation. In addition, using detailed reporting, Qwerti will regularly analyse the health of a server and recommend proactive steps to improve performance and reduce down-time. We provide comprehensive security, including anti-virus and patch management, which is vital to ensure that your operating system is secure

Whilst many companies are adopting a cloud strategy, infrastructure still needs to remain onsite to power mission critical applications like CRM and ERP. We offer server rentals including custom scoping and design services.

## Features and Benefits

### Proactive monitoring

alerts our team of engineers of any issues within your IT environment so that we can resolve them when they are molehills rather than mountains. This keeps your IT environment healthy.

### Patch Management

Keeping software current is crucial for businesses today, but in many disciplines, updating features may cause more problems than it solves. This is why our RMM software

has full support for Microsoft's new Monthly Security-Only updates, enabling us to keep important servers secure while reducing the risk of incompatibilities with your software.

### Server Support

Server failures and problems can be resolved by our team of certified engineers remotely and onsite, saving you time and money.

### Anti-Virus

Every managed server includes anti-virus and anti-malware.

**Patch management is vital in ensuring that your operating system is secure, as many viruses use known vulnerabilities to infect machines.**